

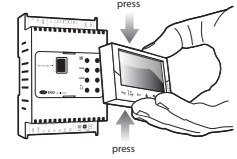
EVD*T*, EVDIS* - EVD evolution - Electronic expansion valve driver and graphic display



LEGGI E CONSERVA QUESTE ISTRUZIONI
READ AND SAVE THESE INSTRUCTIONS



Display board mounting



Refrigerant compatibility

R22; R134a; R404A; R407C; R410A; R507A; R290; R600; R600a; R717; R744; R728; R1270; R417A; R422D; R413A; R422A; R423A; R407A; R427A; R245Fa; R407F; R32; HTR01; HTR02; R23; R1234yf; R1234ze; R455A; R170; R442A; R447A; R448A; R449A; R450A; R452A; R508B; R452B; R513A; R454B; R458A

Table of product codes

EVD evolution TWIN		display (accessory)	
code	description	code	description
EVD0000T00	EVD Evolution twin universal (tLAN)	EVDIS00CNO	Display (Chinese)
EVD0000T01	EVD Evolution twin universal (tLAN), 10 pcs*	EVDIS00CZO	Display (Czech)
EVD0000T10	EVD Evolution twin universal (pLAN)	EVDIS00DEO	Display (German)
EVD0000T11	EVD Evolution twin universal (pLAN), 10 pcs*	EVDIS00ENO	Display (English)
EVD0000T20	EVD Evolution twin universal (RS485/Modbus*)	EVDIS00E50	Display (Spanish)
EVD0000T21	EVD Evolution twin universal (RS485/Modbus*), 10 pcs*	EVDIS00FR0	Display (French)
EVD0000T30	EVD Evolution twin for CAREL valves (tLAN)	EVDIS00ITO	Display (Italian)
EVD0000T31	EVD Evolution twin for CAREL valves (tLAN), 10 pcs*	EVDIS00JPO	Display (Japanese)
EVD0000T40	EVD Evolution twin for CAREL valves (pLAN)	EVDIS00PLO	Display (Polish)
EVD0000T41	EVD Evolution twin for CAREL valves (pLAN), 10 pcs*	EVDIS00PTO	Display (Portuguese)
EVD0000T50	EVD Evolution twin for CAREL valves (RS485/Modbus*)	EVDIS00RUO	Display (Russian)
EVD0000T51	EVD Evolution twin for CAREL valves (RS485/Modbus*), 10 pcs*	EVDIS00SE0	Display (Swedish)
		other accessories	
		EVDCON0021	Connector kit 10 pcs
		EVDNCN00E0	USB/tLAN converter
		TRADRFE240	35VA transformer
		EVD0000UCO	Ultracap module

(*) The multiple packages are not supplied with connectors

Table of valve compatibility

Model	Model
CAREL E**V***	CAREL E**V***
ALCO EX4; EX5; EX6; EX7; EX8 330 Hz (consigliato da CAREL/supported by CAREL); EX8 500 Hz (da specifiche ALCO/from ALCO specifications)	ALCO EX4; EX5; EX6; EX7; EX8 330 Hz (consigliato da CAREL/supported by CAREL); EX8 500 Hz (da specifiche ALCO/from ALCO specifications)
SPORLAN SEI 0.5-11; SER 1.5-20; SEI 30; SEI 50; SEH 100; SEH175	SPORLAN SEI 0.5-11; SER 1.5-20; SEI 30; SEI 50; SEH 100; SEH175
Danfoss ETS 12.5-25B; ETS 50B; ETS 100B; ETS 250; ETS 400; CCM 10-20-30; CCM-40	Danfoss ETS 12.5-25B; ETS 50B; ETS 100B; ETS 250; ETS 400; CCM 10-20-30; CCM-40
CAREL Due EXV CAREL collegati insieme / Two CAREL ExV connected together	CAREL Due EXV CAREL collegati insieme / Two CAREL ExV connected together
SPORLAN SER(I) G, J, K	SPORLAN SER(I) G, J, K

ENG For further information, see the "EEV system guide" (code +030220811) and the user manual (code +0300006EN) available at www.carel.com, under the "Literature" section.

Table of EVD LEDs

LED	on	off	flashing
net	connection made	no connection	communication error
open A/B	valve A/B opening	-	first configuration
close A/B	valve A/B closing	-	first configuration
open B / close B	-	-	EVD twin → single
alarm driver A/B	alarm driver A/B active	-	-
driver powered	driver powered	driver not powered	wrong power supply

Note: if open and close LEDs blink at the same time, the commissioning procedure has to be executed.

Display keypad

- key function**
Prg goes directly to the screen for entering the password to access programming mode
Esc exits programming mode (service, manufacturer) and display;
 • after setting a parameter, exits without saving the change.
TEMP
 • in alarm mode displays the alarm queue;
 • in the "manufacturer" level, when scrolling the parameters, shows the help screens.

IMPORTANT WARNINGS

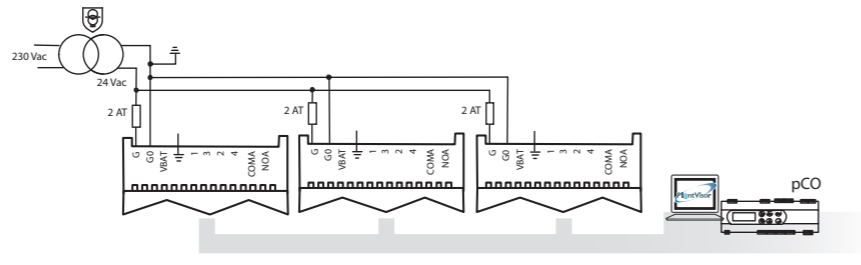
The CAREL product is a state-of-the-art device, whose operation is specified in the technical documentation supplied with the product or can be downloaded, even prior to purchase, from the website www.carel.com. The customer (manufacturer, developer or installer of the final equipment) accepts all liability and risk relating to the configuration of the product in order to reach the expected results in relation to the specific installation and/or equipment. The failure to complete such phase, which is required/indicated in the user manual, may cause the final product to malfunction; CAREL accepts no liability in such cases. The customer must use the product only in the manner described in the documentation relating to the product. The liability of CAREL in relation to its products is specified in the CAREL general contract conditions, available on the website www.carel.com and/or by specific agreements with customers.

Separate as much as possible the probe and digital input signal cables from the cables carrying inductive loads and power cables to avoid possible electromagnetic disturbance. Never run power cables (including the electrical panel wiring) and signal cables in the same conduits.

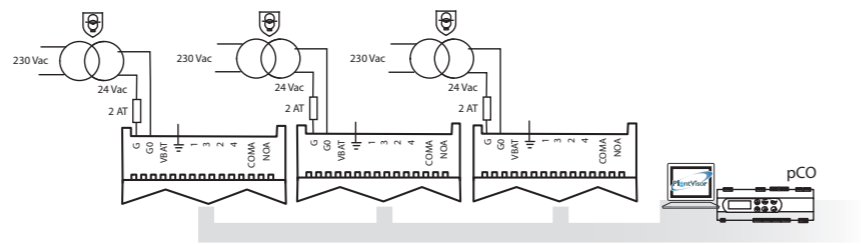
Disposal of the product
 The appliance (or the product) must be disposed of separately in accordance with the local waste disposal legislation in force

tLAN, pLAN and RS485 connections and power supply

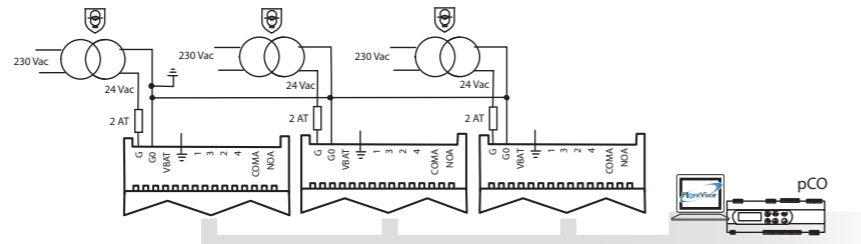
Case 1: a series of drivers is connected in a network, installed in the same electrical panel, powered by the same transformer



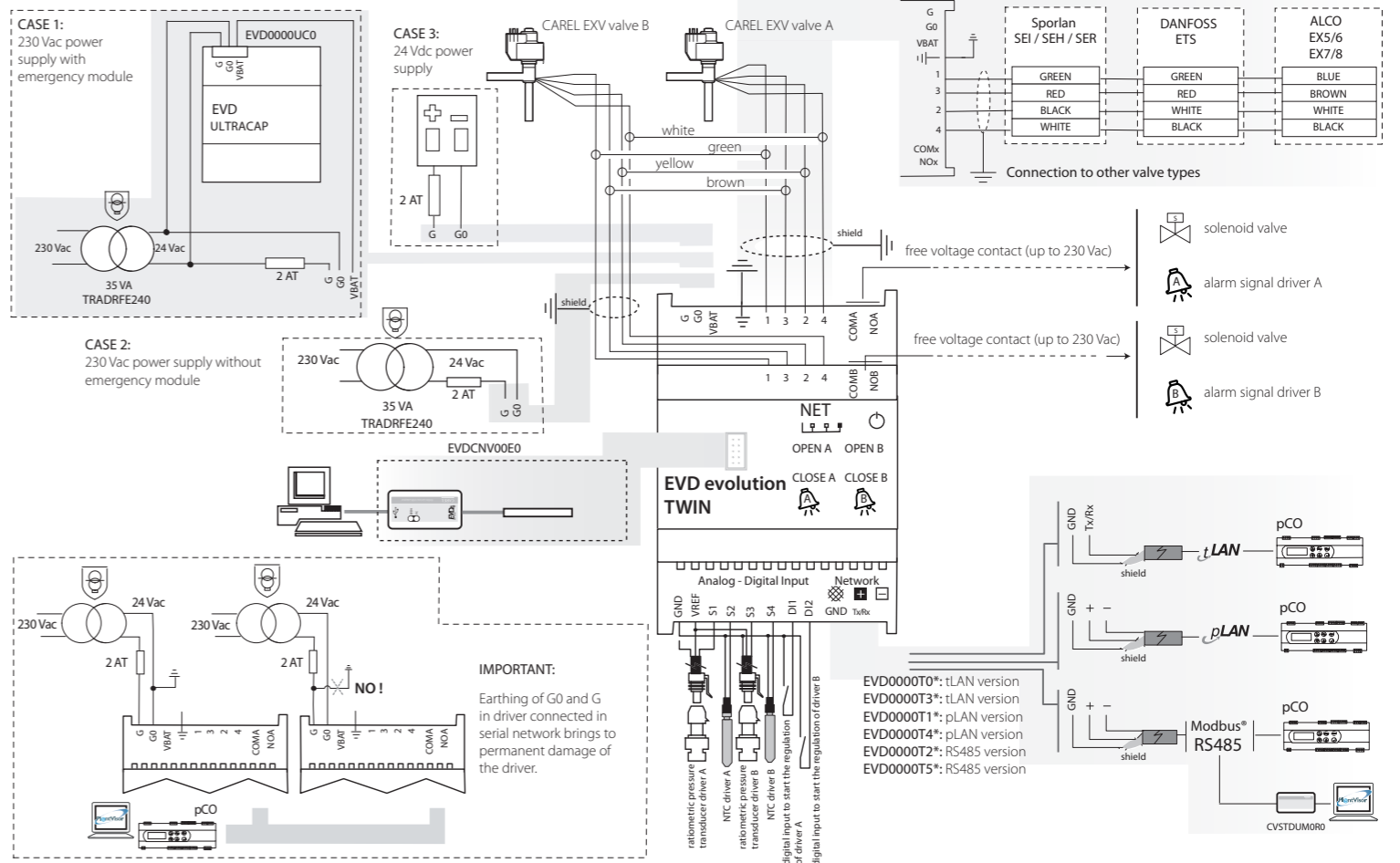
Case 2: a series of drivers is connected in a network, installed in electrical different panels, powered by different transformers (G0 not connected to earth).



Case 3: a series of drivers is connected in a network, installed in electrical different panels, powered by different transformers with just one earth point.



Wiring diagram for superheat control



FRE Configuration des paramètres base

GER Einstellung der Basisparameter

SPA Ajuste de los parámetros básicos

POR Configuração dos parâmetros base

