

Suction Line Filters and Filter Driers Series ASF and ASD

Hermetic Design

Features

- Minimum pressure drop due to internal construction and compacted bead style
- Service friendly with 2 Schrader valves for pressure drop measurement
- ODF Copper fittings for easy soldering
- Filtration down to 10 micron
- Temperature range TS: -45°C to +50°C
- Max. allowable pressure PS: 27,5 bar
- No CE marking according art. 3.3 PED 97/23 EC
- HP marking according to German Pressurized Vessel Directive



ASF, ASD

Suction Line Filters

Type	Part No.	Connection Solder/ODF		Nominal Capacity Qn kW				
		mm	inch	R134a	R22	R404A	R407C	R507
ASF-28 S3	008 965		3/8	6.0	8.4	7.7	7.8	7.7
ASF-28 S4	008 941		1/2	9.9	14.4	13.4	13.4	13.4
ASF-35 S5	008 915	16	5/8	15.9	23.2	21.4	21.6	21.4
ASF-15 S6	008 946		3/4	23.3	34.5	32.0	32.1	32.0
ASF-45 S7	008 904	22	7/8	32.5	42.5	34.5	39.5	34.5
ASF-50 S9	008 908		1 1/8	46.0	67.1	55.5	62.4	55.5
ASF-75 S11	008 919	35	1 3/8	60.2	85.4	70.7	79.4	70.7
ASF-175 S13	008 940		1 3/8	65.4	87.5	73.1	81.4	73.1

Suction Line Filter Driers

Type	Part No.	Connection Solder/ODF		Nominal Capacity Qn kW				
		mm	inch	R134a	R22	R404A	R407C	R507
ASD-28 S3	008 909		3/8	5.5	8.1	7.4	7.5	7.4
ASD-28 S4	008 910		1/2	9.1	13.4	12.7	12.5	12.7
ASD-35 S5	008 899	16	5/8	14.3	20.4	19.0	19.0	19.0
ASD-15 S6	008 925		3/4	19.1	24.6	22.5	22.9	22.5
ASD-45 S7	008 896	22	7/8	25.0	32.3	26.4	30.0	26.4
ASD-50 S9	008 881		1 1/8	35.3	46.4	38.3	43.2	38.3
ASD-75 S11	008 891	35	1 3/8	42.9	56.9	47.8	52.9	47.8
ASD-175 S13	008 953		1 3/8	45.2	60.8	51.0	56.5	51.0

Nominal flow capacity at +4°C evaporating temperature (saturated condition/dew point) and a pressure drop of 0.21 bar between inlet and outlet of ASF/ASD. Correction factor for other evaporating temperatures than +4°C:

$$Q_n = Q_o \times K_s$$

- Q_n : Nominal capacity
 K_s : Correction factor for a pressure drop corresponding 1 K saturation temperature
 Q_o : Required cooling capacity

Evaporating Temperature (°C)	+4	0	-5	-10	-15	-20	-25	-30	-35	-40
Correction Factor kt	1.00	1.12	1.35	1.75	2.00	2.50	3.00	3.75	5.00	6.60

Water and Acid Adsorption Capacity

Type	Water Adsorption Capacity (gram)										Acid Adsorption Capacity (g)
	Liquid Temperature 24°C					Liquid Temperature 52°C					
	R134a	R22	R404A R507	R407C	R410A	R134a	R22	R404A R507	R407C	R410A	
ASD-28	11.8	5.7	12.2	9.1	8.0	10.0	3.6	9.7	6.7	5.6	3.0
ASD-35	14.5	7.0	15.0	11.2	9.9	12.3	4.4	12.0	8.2	6.9	3.6
ASD-45	18.0	8.8	18.6	13.9	12.3	15.3	5.5	14.9	10.2	8.6	4.5
ASD-50	21.4	10.4	22.2	16.5	14.6	18.2	6.5	17.7	12.1	10.2	5.4
ASD-75	31.5	15.4	32.6	24.3	21.5	26.7	9.6	26.0	17.8	15.0	7.9

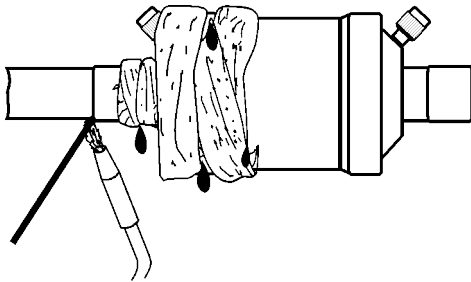


Fig. 1

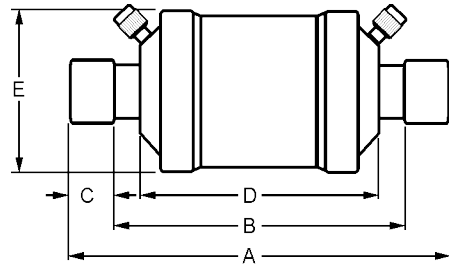


Fig. 2

	A (mm)	B (mm)	C (mm)	D (mm)	E (mm)
ASD/ASF-28 S3	142	120	11	105	94
ASD/ASF-28 S4	144	119	13	105	94
ASD/ASF-35 F5	192	-	-	121	94
ASD/ASF-35 S5	166	134	16	121	94
ASD/ASF-45 S6	197	165	16	141	94
ASD/ASF-45 S7	202	164	19	141	94
ASD/ASF-50 S9	225	179	23	156	94
ASD/ASF-75 S11	308	262	25	210	94
ASD/ASF-75 S13	309	252	29	210	94